



Upgrade Kit

for Sim Pedals Ultimate

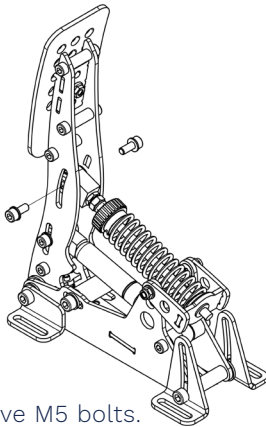
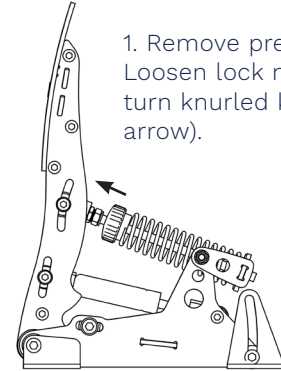


Throttle and clutch pedal

The images/instructions on this page show the throttle pedal.

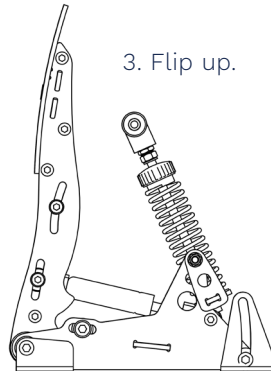
The replacement procedure for the clutch pedal is identical. The parts which you need to replace are the same.

1. Remove preload: Loosen lock nut and turn knurled knob (see arrow).

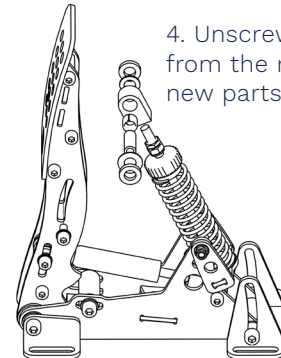


2. Remove M5 bolts.

3. Flip up.

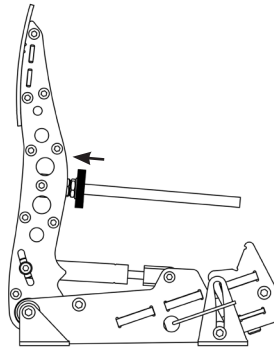


4. Unscrew rod-end from the rod and install new parts as shown.



Note: you must re-use the thickest black washers. You can discard the thinnest black washers. These are replaced by a shim on one side and a disc spring on the other side.

Brake pedal

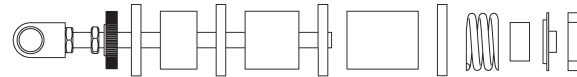
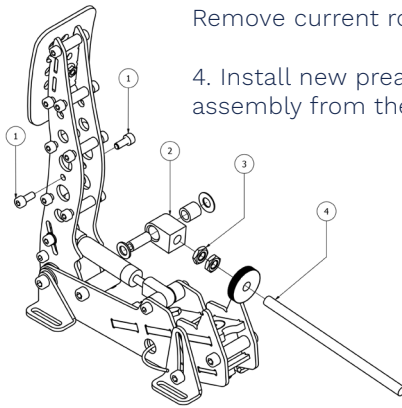


1. Remove preload: Loosen lock nut and turn knurled knob (see arrow).

2. Remove all loose parts. They will all be replaced except for the metal coil spring.

3. Remove M5 bolts (#1 in image).
Remove current rod assembly.

4. Install new preassembled rod assembly from the upgrade kit.



5. Add discs, rubbers, metal coil spring, coil spring inner spacer, backplate bearing (double check orientation) and the new backplate. These are all new parts (including the backplate, except the metal coil spring).

6. Click backplate into position and reapply preload.

Electronics

After upgrading the pedals, you can replace the old controller with the new SmartControl controller box.

When you have connected the upgraded pedals to the new controller, you must calibrate the pedals using the Heusinkveld SmartControl software. In order to download SmartControl, please go to heusinkveld.com/support.

A video tutorial explaining how to install this upgrade kit can also be found at heusinkveld.com/support. You can also scan the QR code on the right in order to access the video.

**Check the tutorial video
on our youtube channel.**



Remco will guide you
through the process!

HEUSINKVELD.COM

